



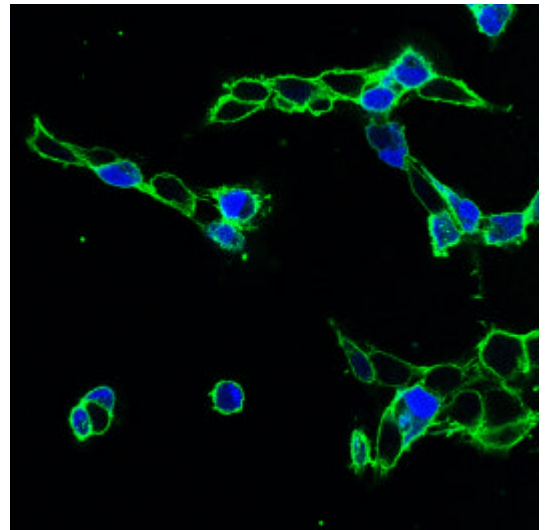
MetaBre Update – July 2007

MetaBre progress in research

The EU-funded **MetaBre** project has now continued into a fourth year. The **MetaBre** partners are working on different aspects of organ-specific metastasis in breast cancer, focusing on molecular mechanisms. Work is being conducted on metastasis to lymph nodes, bone, and soft tissues (liver, lung and brain).

The project generated large amounts of genomic data in its first two years, obtained from cell lines which metastasise to specific organs in animal models, and from human clinical specimens. In the last year data has been added from a proteomic analysis of cell membranes (right).

Data collection continues on some cell lines. This data is being utilised in two ways. Firstly, the data has been analysed for sets of molecular markers for prognosis of organ-specific metastasis, which could be identified in primary breast tumours upon diagnosis.



This part of the work has generated some promising results which have been patented, and are being published during the course of 2007. Markers identified from cell lines using proteomics are also under validation, and the data is being checked for soluble markers that may be found in blood serum and used as diagnostic markers.

Secondly, the MetaBre partners are collaborating on the joint study of selected molecules identified as being strongly up- or down-regulated in cancer cells metastasising to specific organs. Typically, following validation of the gene of interest in human clinical samples, its expression is being modified in cancer cell lines, and any changes in metastatic phenotype characterised by in vitro and in vivo assays. These studies may provide new information on the molecular mechanisms of metastasis in breast cancer and identify new therapeutic targets.

MetaBre publications and conferences

MetaBre partners have continued to submit results for journal publication throughout the year. Please refer to the MetaBre website for details. The MetaBre project is cooperating with the BRECOSM project to organise a conference “Breast Cancer and Metastasis” in Rome, December 5th-7th 2007. This has a strong international participation of invited speakers and each project will present its results. Details of the conference programme and registration information is available on the MetaBre website.

MetaBre observer group

MetaBre is running an observer group of clinicians, patient groups, companies and other researchers interested in the results of the project. The observers receive “**MetaBre** Update” every six months. This will contain non-confidential news on the project and can be distributed freely via print or electronic media. Membership of the observer group is free. Observers are welcome to contact the **MetaBre** coordinator with any comments on the project, and there is the possibility also of more active collaboration in the research or dissemination activities.

Contact us

Professor Anna Teti
Department of Experimental Medicine
University of L’Aquila
Via Vetoio – Coppito 2
67100 L’Aquila
ITALY

Tel: +39 0862 433511
Fax: +39 0862 433523
Email: info@metabre.org
<http://www.metabre.org>